

13	Bed & breakfast/Lodge	07	Letters written to the owners
14	Food handling premises	14	Health education and written notices
15	Meat inspection	875	Carcasses were inspected and condemnations were made

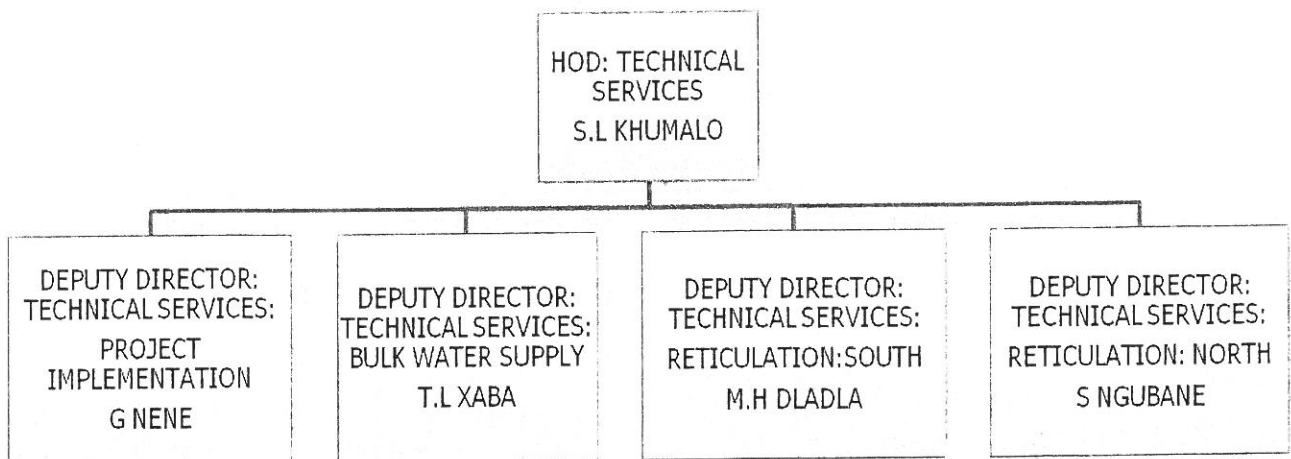
### 4.3. TECHNICAL DEPARTMENT



The Technical Department is headed by Mr.S.L Khumalo. The Technical Department is divided into three main divisions, viz:

- Project Management Unit (PMU)
- Bulk Water and Wastewater Management
- Rural and Urban Reticulation

#### ORGANOGRAM FOR THE SENIOR MANAGEMENT: TECHNICAL SERVICES DEPARTMENT:



The strategic objective for the Technical Services Department is to progressively provide cost effective, reliable water services of good quality to all potential consumers in the district.

The core function of the Technical Department is therefore:

- To implement the new infrastructure (Water and Sanitation).
- Operation and Maintenance of the secondary bulk and reticulation.
- Management, Operation and Maintenance of Bulk Water and Waste Water Infrastructure.

The key issues for 2008/2009 are listed as follows:

- To improve on the percentage of households with access to basic level of water.
- To improve on the percentage of households with access to basic level of sanitation.
- To improve on the number of required water quality tests conducted (samples).
- To reduce number of plant days down time.
- To improve on average response time to rectify breakage in service
- To improve on percentage of households earning less than R1100 pm with access to free water (Note: Rudimentary LOS included).
- To improve on percentage of households earning less than R1100 pm with access to free sanitation.
- To improve on communication with customers on planned interruptions before disruptions occur.
- To improve on communication with customers on unplanned interruptions .
- To improve on time taken to respond to customer queries.
- To ensure that 100% of MIG grant fund is spent within the financial year.

#### 4.3.1 PROJECT MANAGEMENT UNIT (PMU)

The Project Management Unit is responsible for the implementation of all the capital projects in the district. The unit has a total of 6 technical officers, two Institutional Social Development Officers (ISDO) and a Senior Project Administrator.

Employees	Number	Cost to Employer
Professionals	10	R 2,526,743.60

The current total Business Plans approved by the Municipal Infrastructure Grant (MIG) is in excess of R 1,541,959,888.40 and this makes Zululand District Municipality to be at least having committed projects for more than eight (8) years ahead, considering the current rate of MIG fund allocation which is approximately R180,000,000.

#	BP Name	MIG No.	BP Value	Exp	Balance
1	Nkonjeni Regional Water Supply Scheme Phase I	2004MIGFDC260002	36,391,983.00	36,391,982.71	0
2	ZDM Clinic Sanitation Project	2005MIGFDC260003	6,017,716.00	4,664,805.09	1,352,910.90
3	Rudimentary Water Supply Programme PH 2	2005MIGFDC260005	65,753,900.00	57,147,074.84	8,606,825.20
4	Mandlakazi Regional Water Scheme Phase 2B	2005SMIFDC260001	6,772,309.00	5,266,533.08	1,505,775.90
5	Hlobane Sports Field	2006MIGFDC26112022	16,370,000.00	2,612,200.24	13,757,799.80
6	Nkonjeni Regional Water Supply Scheme Ph 2	2006MIGFDC26102044	75,296,406.93	23,245,883.26	52,050,523.70
7	Ulundi Sports Phase 5	2006MIGFDC26113956	5,200,000.00	5,067,552.30	132,447.70
8	Usuthu RWSS Phase 4	2006MIGFDC265319	25,059,986.00	23,989,526.47	1,070,459.50
9	Usuthu RWSS Phase 3	2006MIGFDC265325	89,093,640.00	2,421,360.00	86,672,280.00
10	Usuthu RWSS Phase 2	2006MIGFDC265328	32,483,514.00	3,020,454.63	29,463,059.40
11	Usuthu RWSS Phase 1	2006MIGFDC265329	96,259,053.00	15,232,256.86	81,026,796.1
12	Mandlakazi RWSS Phase 2C	2006MIGFDC265331	22,120,203.00	17,817,072.93	4,303,130.10
13	Simdlangentsha Central RWSS Ph 2	2006MIGFDC265332	30,366,875.54	21,576,523.05	8,790,352.50
14	Khambi RWSS Water Supply	2006MIGFDC265333	23,704,261.00	20,159,912.61	3,544,348.40
15	Hlahlindlela/ Mondlo Regional Water Supply	2006MIGFDC265334	167,579,680.00	31,602,815.11	135,976,864.90
16	Simdlangentsha East RWSS Phase 1	2006MIGFDC265336	25,683,733.70	2,306,393.91	23,377,339.80
17	Simdlangentsha West RWSS Phase 2.1	2006MIGFDC265339	59,477,291.00	34,504,274.83	24,973,016.20
18	Mona Sports Field	2006MIGFDC265341	19,500,000.00	3,030,664.15	16,469,335.90
19	Coronation RWSS Enyati (AFA) MIS 155365	2006MIGFDC265351	34,927,055.48	18,832,419.67	16,094,635.80
20	Emergency Alteration to the Zondela Sewer Outfall	2008MIGDC26123070	977,846.27	716,328.82	261,517.20
21	Nkonjeni RWSS MIG Phase 3 (Central)	2008MIGDC26165025	27,715,450.00	7,840,939.40	19,874,510.60
22	Gumbi Emergency Water Supply	2008MIGDC26165601	26,464,362.00	5,318,420.97	21,145,941.00
23	ZDM Rural Sanitation Phase 01	2008MIGFDC26156876	195,891,411.00	12,054,433.95	183,836,977.10
24	Mandlakazi Regional Water Supply Scheme (Ph 4)	2008MIGFDC26162234	125,793,218.00	251,855.47	125,541,362.50
25	Ulundi Unit M Water and Sanitation Phase 2	2006MIGFDC26163062	1,085,602.39	505,959.88	579,642.50

26	Emondlo sports field	2008MIGFDC26165006	13,299,314.00	555,282.88	12,744,031.10
27	Nkonjeni Regional Water Supply Scheme Phase 04	2009MIGFDC26171057	310,103,565.51	0.00	310,103,565.51

In 2008-2009 financial year an allocation of R133 million was received from MIG and was successfully spent 100% by the end of March 2009.

The largest percentage, 90.5%, was spent on water, 8% was spent on sanitation and 1.5% on sporting facilities. The large amount of money is currently spent in the development of bulk infrastructure and as the bulk line passes communities, reticulation networks are installed. Where the communities are experiencing acute shortage of water, the rudimentary programme is in place to bring relief and where there are no reliable sources, water tankering is taking place.

Zululand District Municipality, for sustainable water supply, is divided into ten (10) regional schemes with reliable water sources. MIG allocations over a period of three years, per regional scheme, are tabled as follows.

Name of the regional scheme	Allocation for financial year 09/10	Allocation for financial year 10/11	Allocation for financial year 11/12
Nkonjeni Regional Water Supply Scheme	R 22,703,000	R 28,330,000	R 33,169,000
Usuthu Regional Water Supply Scheme	R 27,330,000	R 30,360,000	R 36,430,000
Mandlakazi Regional Water Supply Scheme	R 17,770,000	R 21,690,000	R 23,680,000
Rudimentary water supply programme ph2	R 3,181,000	R 3,886,000	R 4,240,000
Simdlangentsha East Regional Water Scheme	R 5,466,000	R 6,672,000	R 9,286,000
Simdlangentsha Central Regional Water Scheme	R 7,056,000	R 6,672,000	R 9,286,000
Simdlangentsha West Regional Water Scheme	R 5,466,000	R 6,672,000	R 9,286,000
Khambi Regional Water Scheme	R 5,466,000	R 6,672,000	R 9,286,000
Coronation/Enyathi Regional Water Scheme	R 7,804,000	R 8,341,000	R 9,286,000
Hlahlindlela/eMondlo Regional Water Scheme	R 13,194,000	R 16,196,000	R 15,446,000
Rural Sanitation	R 31,810,000	R 34,830,000	R 45,400,000
Zondela Sewer Outfall	R 500,000	-	-
Sportsfield	R 9,543,000	R 13,591,000	R 14,840,000
Gumbi Emergency	R 4,099,000	R 5,004,000	R 7,464,000
<b>MIG TOTAL/ FIN YR</b>	<b>R 161,388,000</b>	<b>R 188,916,000</b>	<b>R 227,099,000</b>

The MIG expenditure for the financial year 08/09 (July 08 to June 09) is listed below in the table per regional scheme:

<b>Name of the regional scheme</b>	<b>Brief project description</b>	<b>Total expenditure 08/09</b>
Nkonjeni Regional Water Supply Scheme	Construction Reservoir, reticulation, bulk pipeline	R 24,736,402.00
Usuthu Regional Water Supply Scheme	reservoirs, bulk pipeline	R27,033,452.00
Mandlakazi Regional Water Supply Scheme	Construction of a reticulation pipeline,	R 5,945,478.3
Rudimentary water supply programme Ph2	Construction of reticulation, reservoirs, drilling of boreholes,	R18,912,140.83
Gumbi Emergency	Pump station, rising main	R6,469,588.33
Simdlangentsha East Regional Water Scheme		R0
Simdlangentsha Central Regional Water Scheme		R0
Simdlangentsha West Regional Water Scheme	Construction of reticulation, reservoir	R3,930,907.66
Emergency to Zondela Sewer Outfall	Sewer	R 842,339.17
Rural Sanitation	Material supply and implementation	R 10,772,920.52
Khambi Regional Water Scheme	Construction of a reticulation and pump station	R3,259,941.69
Coronation/Enyathi Regional Water Scheme	Construction of bulk water and sewer.	R8,290,016.32
Hlahlindlela/eMondlo Regional Water Scheme	Construction of water treatment plant.	R5,239,017.97
Sporting Facilities(Ulundi, Mona, Hlobane & Swimming Pool)		R1,969,499.30

Listed below are the house hold figures achieved by individual regional scheme during the year 08/09 financial from July 2008 to June 2009.

<b>Name of the regional scheme</b>	<b>Households benefited (yard connections)</b>	<b>Households benefited (community standpipes)</b>
Nkonjeni Regional Water Supply Scheme	381	1589
Usuthu Regional Water Supply Scheme	387	445
Mandlakazi Regional Water Supply Scheme	0	97
Simdlangentsha West Regional Water Scheme	102	
Khambi Regional Water Scheme	75	
Hlahlindlela/eMondlo Regional Water Scheme	450	
<b>TOTAL</b>	<b>1395</b>	<b>2131</b>

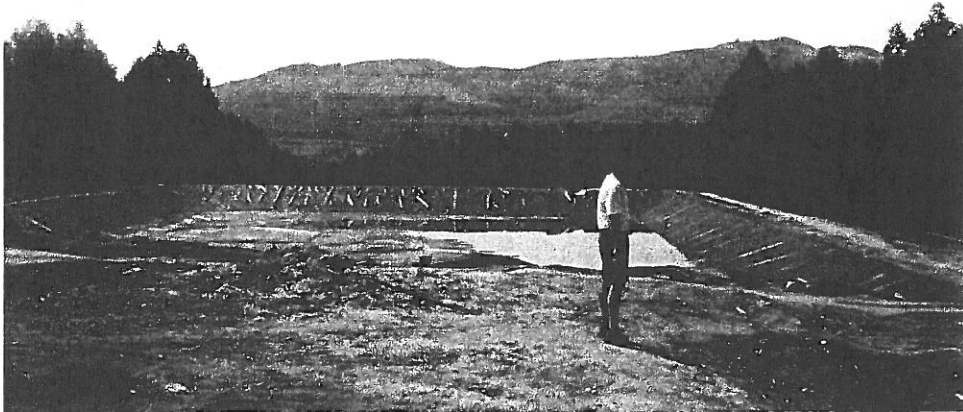
The expenditure for the MIG funded projects for the quarters is tabled below.

<b>Quarter 1</b>	<b>Quarter 2</b>	<b>Quarter 3</b>	<b>Quarter 4</b>	<b>Quarter 5</b>	<b>TOTAL EXP</b>
April - June	Jul – Sept	Oct - Dec	Jan - Mar	Apr- Jun	
R 10,986,129.5	R 15,897,397.1	R 47,538,993.9	R 59,401,205.8	R 22,477,737.7	R 156,301,464.0

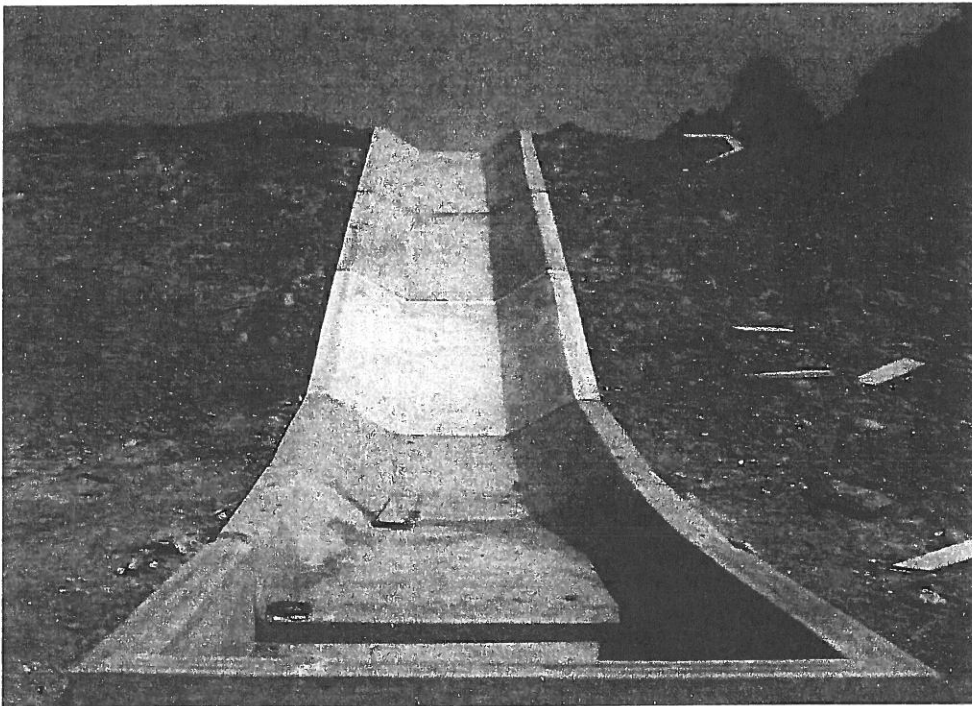
#### **ZDM FUNDED CAPEX PROJECTS**

<b>Local</b>	<b>School</b>	<b>Sanitation</b>	<b>Crèches</b>	<b>Fencing</b>	<b>Halls/Taxi Ranks</b>	<b>Sports Facility</b>
Nongoma	R 500 000	-	R 460 000	R 200 000	R 200 000	-
Edumbe	-	-	R 400 000		R 100 000	-
Pongola	R 260 000	-	R 600 000		R 750 000	-
Abaqulusi	R 750 000	-	R 200 000	R 60 000	R 750 000	-
Ulundi	-	-	R 1 000 000	R 80 000	R 3,250,000	-

Coronation/Enyathi – Waste Water treatment works : **Sewer ponds under construction**

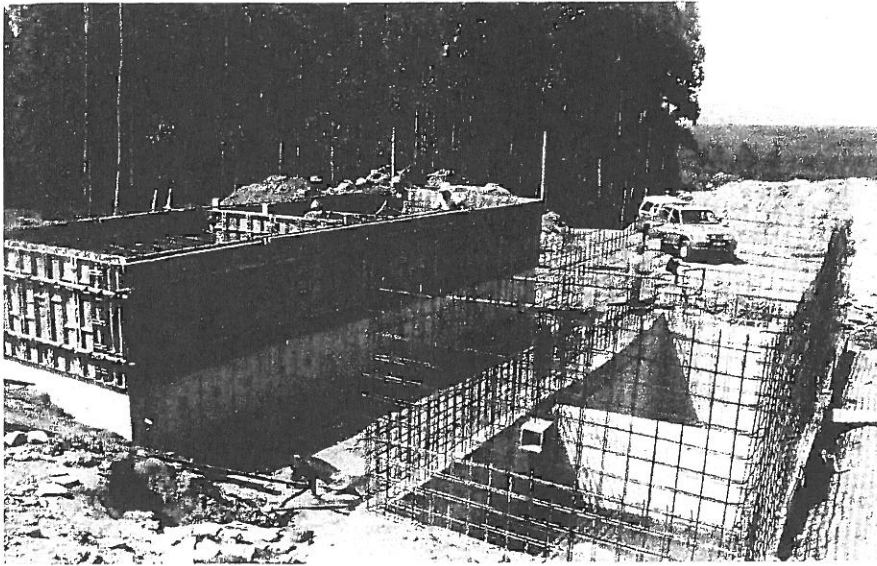


Coronation/Enyathi – Waste Water treatment works :  
**Sewer pond emergency overflow**

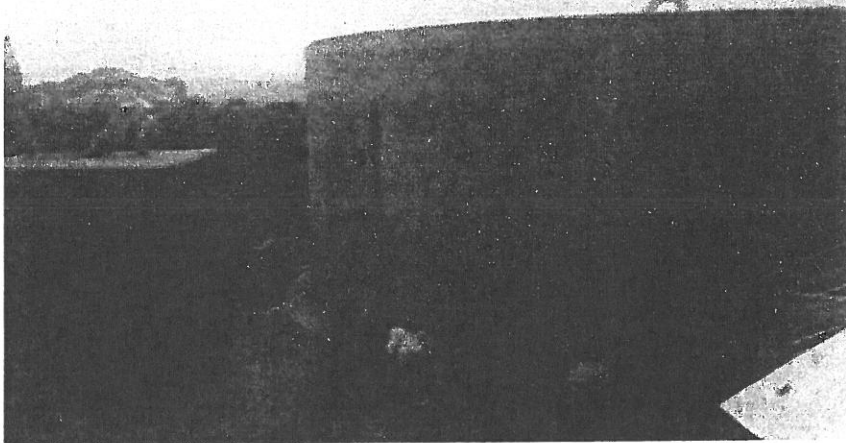


Coronation/Enyathi – Waste Water treatment works : **Sewer septic tanks**

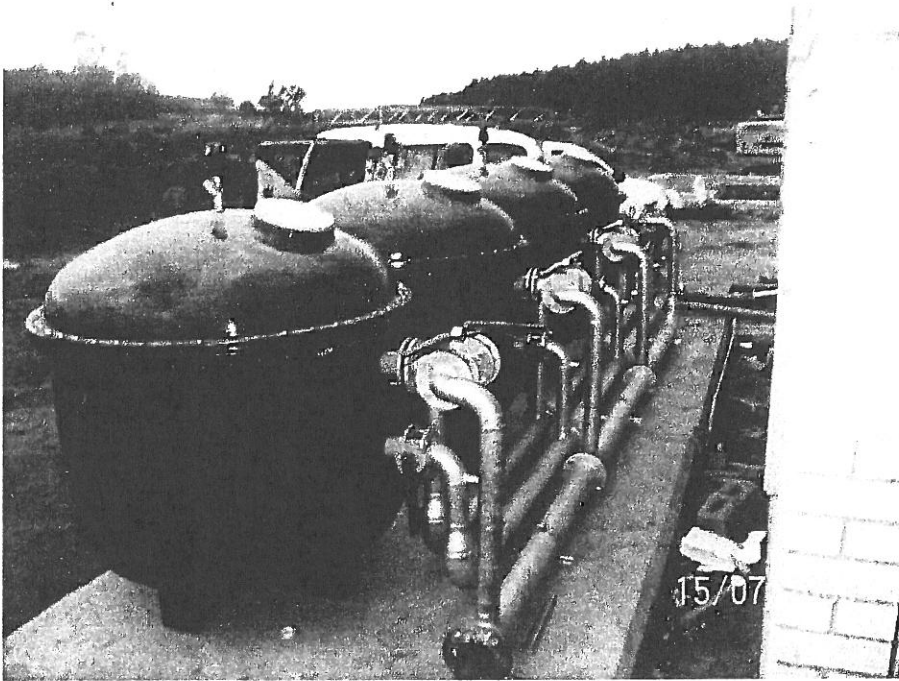




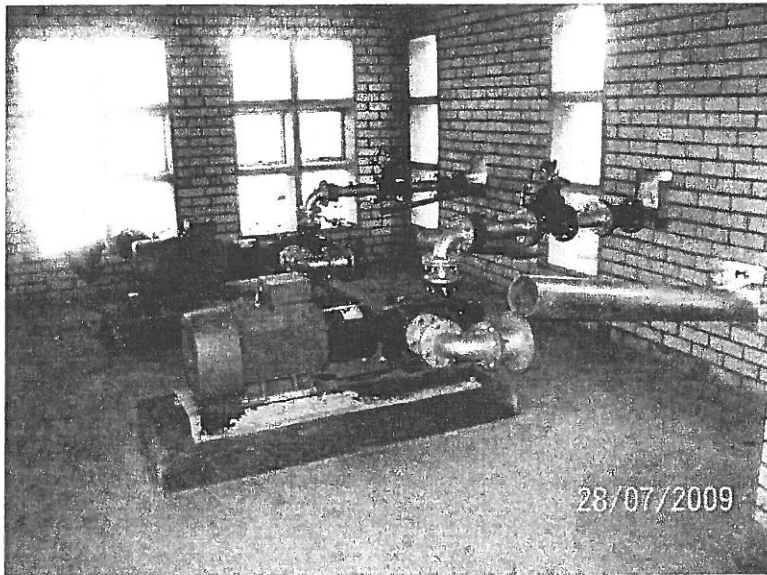
**Reservoir at Masokaneni**



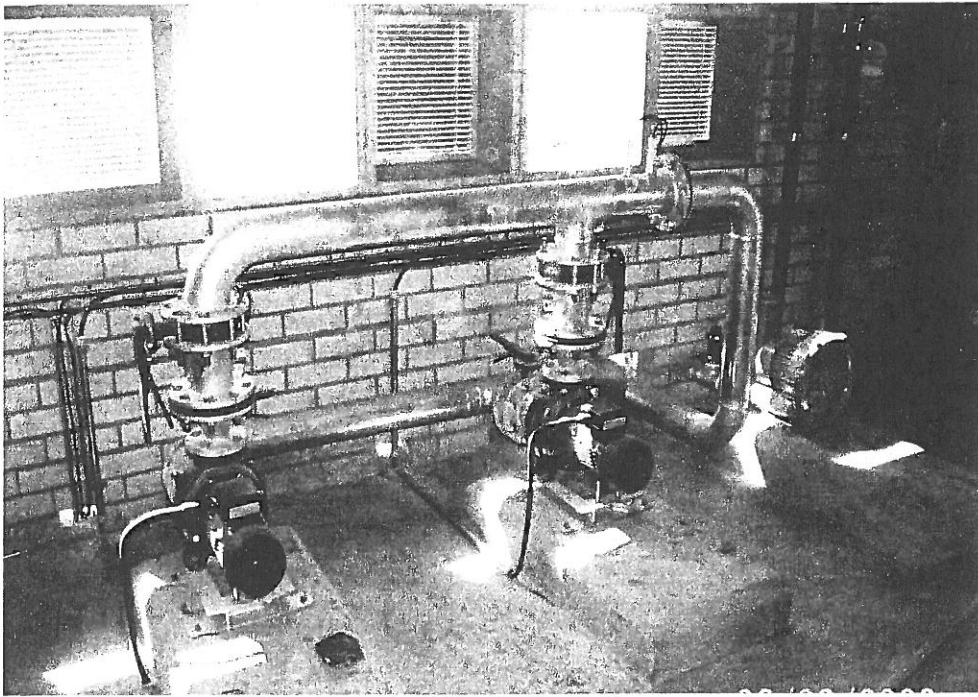
Coronation/Enyathi – Water treatment works: Clarifier



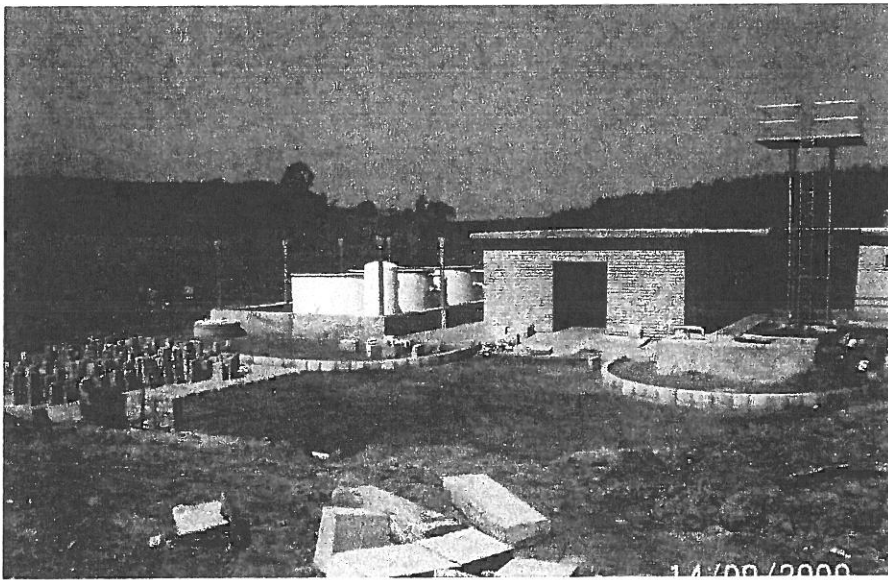
Coronation/Enyathi – Water treatment works : High lift pumps



Coronation/Enyathi – Water treatment works: Filter pumps



Coronation/Enyathi – Water treatment works



Inkosi Buthelezi Hall



Traditional Leaders Facility at Ulundi

